

Round Cap sw

F39

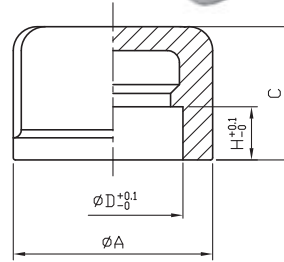
Class 150



Standard Pattern

SIZE	A		C		D		H	
	mm	in	mm	in	mm	in	mm	in
1/8"	15.9	0.63	17	0.67	11	0.43	8.1	0.32
1/4"	19.1	0.75	18.1	0.71	14	0.55	8.1	0.32
3/8"	22.7	0.89	18.2	0.72	17.5	0.69	8.1	0.32
1/2"	29.2	1.15	20	0.79	22	0.87	8.1	0.32
3/4"	34.3	1.35	21.6	0.85	27.3	1.07	9.4	0.37
1"	42	1.65	26.5	1.04	34	1.34	11.2	0.44
1-1/4"	51.1	2.01	29	1.14	43.3	1.7	12.7	0.5
1-1/2"	57.8	2.28	28.8	1.13	49	1.93	12.7	0.5
2"	70.4	2.77	31.6	1.24	61	2.4	14.2	0.56
2-1/2"	83.2	3.28	38.7	1.52	73.5	2.89	14.2	0.56
3"	100.2	3.94	40.7	1.6	89.8	3.54	14.2	0.56
4"	127.5	5.02	41	1.61	115.5	4.55	17.5	0.69

Tolerance: $\pm 0.5\text{mm}$ (1/8"~2")
 $\pm 0.8\text{mm}$ (2-1/2"~4")



Type
Approval
P-13548

CE CRN
0035 REGISTERED



ATEX
II2GD

TA-Luft ISO 15848 REACH
VDI 2440 LOW EMISSION (EC 1907/2006)



8F., No.201, Sec. 2, Tiding Blvd., Neihu District, Taipei City 114, Taiwan R.O.C.
 TEL : +886-2-2658-5800 FAX : +886-2-2658-2266 / 2799-7766

[Http://www.haitima.com.tw](http://www.haitima.com.tw)
 E-mail : haitima@seed.net.tw