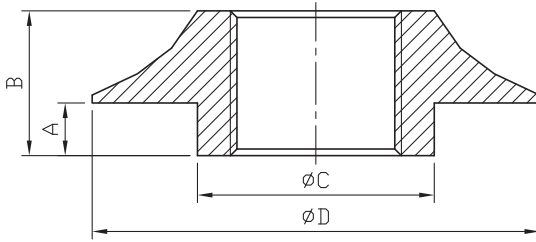


# Weld Spud

**F27**

Class  
**150**



## Standard Pattern

SIZE	1/8"		1/4"		3/8"		1/2"		3/4"		1"		1-1/4"		1-1/2"		2"		2-1/2"		3"		4"			
	mm	in	mm	in	mm	in	mm	in	mm	in	mm	in	mm	in	mm	in	mm	in	mm	in	mm	in	mm	in		
A	4.3	0.17	4.3	0.17	4.3	0.17	4.5	0.18	4.5	0.18	5.2	0.2	5.2	0.2	5.2	0.2	5.2	0.2	5.2	0.2	5.2	0.2	5.2	0.2	5.2	0.2
B	11	0.43	11.3	0.44	11	0.43	13.6	0.54	14.3	0.56	16.5	0.65	17.8	0.7	18.2	0.72	19.8	0.78	25.7	1.01	26.1	1.03	28.5	1.12		
C	14.7	0.58	18.4	0.72	22	0.87	26.6	1.05	32.4	1.28	39	1.54	48.4	1.91	55.4	2.18	67.2	2.65	82.7	3.26	97.4	3.83	124.2	4.89		
D	29.8	1.17	33.5	1.32	37.8	1.49	42.3	1.67	47.1	1.85	54	2.13	63.4	2.5	70.4	2.77	82.4	3.24	100.7	3.96	112.3	4.42	114.1	4.49		

Tolerance:  $\pm 0.5\text{mm}$ (1/8"~2")  
 $\pm 0.8\text{mm}$ (2-1/2"~4")



8F., No.201, Sec. 2, Tiding Blvd., Neihu District, Taipei City 114, Taiwan R.O.C.  
TEL : +886-2-2658-5800 FAX : +886-2-2658-2266 / 2799-7766

[Http://www.haitima.com.tw](http://www.haitima.com.tw)  
E-mail : [haitima@seed.net.tw](mailto:haitima@seed.net.tw)