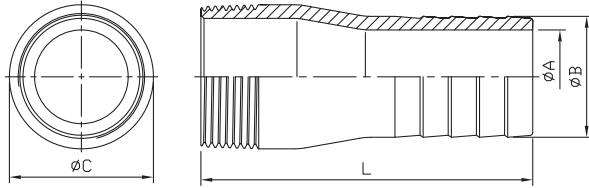


# Barrel Hose Nipple

# F25

Class  
150



## Standard Pattern

SIZE	1/4"		3/8"		1/2"		3/4"		1"		1-1/4"		1-1/2"		2"		2-1/2"		3"		4"	
	mm	in	mm	in	mm	in	mm	in	mm	in	mm	in	mm	in	mm	in	mm	in	mm	in	mm	in
A	3.96	0.16	5.94	0.23	9.12	0.36	15	0.59	19.8	0.78	26.5	1.04	32	1.26	44.45	1.75	54.7	2.15	68.2	2.69	93	3.66
B	6.48	0.26	9.56	0.38	13.6	0.54	19.6	0.77	26.1	1.03	32.8	1.29	39	1.54	51.6	2.03	64.2	2.53	77.4	3.05	102.6	4.04
C	13.8	0.54	17.2	0.68	21.3	0.84	26.9	1.06	33.6	1.32	42.5	1.67	48.3	1.9	60.3	2.37	73	2.87	88.9	3.5	114.3	4.5
L	54	2.13	57.2	2.25	70	2.76	81	3.19	90.5	3.56	94.3	3.71	106.2	4.18	119.4	4.7	139.7	5.5	152.4	6	184.5	7.26

Tolerance:  $\pm 0.5\text{mm}$ (1/4"~2")  
 $\pm 0.8\text{mm}$ (2-1/2"~4")



8F., No.201, Sec. 2, Tiding Blvd., Neihu District, Taipei City 114, Taiwan R.O.C.  
 TEL : +886-2-2658-5800 FAX : +886-2-2658-2266 / 2799-7766

[Http://www.haitima.com.tw](http://www.haitima.com.tw)  
 E-mail : [haitima@seed.net.tw](mailto:haitima@seed.net.tw)