



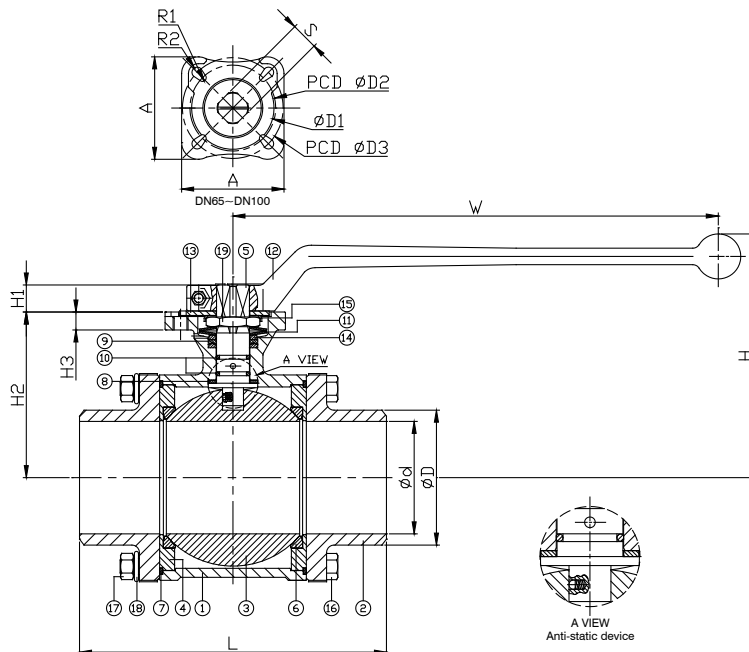
3-PC. BUTT WELD END BALL VALVE

2012D

FEATURES



- Full port, 2-1/2"~4" (DN65~DN100)
 - W.P. : 1000 WOG (PN63)
 - W.T. : -20°C~200°C (-4°F~392°F)
 - Investment casting
 - Blow-out proof stem
 - Live-loading design
 - Anti-static device
 - Locking device
 - ISO 5211 Direct mounting pad
 - ISO 15848 fugitive emission approved (option)
 - Automation accessories (option)
- Butt weld ends conform to ANSI B16.25 & DIN 3239 part 1



ITEM	PARTS	MATERIAL	
1	BODY	ASTM A351-CF8M	ASTM A216-WCB
2	CAP		
3	BALL	ASTM A351-CF8M	
4	RETAINER		
5	STEM	ASTM A276-316	
6	SEAT	PTFE / RTFE	
7	SEAL	PTFE	
8	THRUST WASHER		
9	PACKING	VITON	
10	O-RING		
11	BELLEVILLE WASHER	AISI 301	
12	HANDLE	AISI 304	
13	LOCKING PAD		
14	GLAND RING		
15	LOCKING WASHER		
16	BOLT		
17	NUT		
18	SPRING WASHER		
19	STEM NUT		

DN	d	D	L	H	H1	H2	H3	W	S	A	D1	D2	D3	R1	R2	ISO 5211	Torque (N-M)
65	65	74	170	158	17	105	10	325	17	100	70	70	102	4.5	5.5	F07/F10	89.2
80	76	90	180	165	17	111.5	10	325	17	100	70	70	102	4.5	5.5	F07/F10	97
100	100	115	189	189	22	136	12	325	22	125	100	102	125	5.5	6.5	F10/F12	116

unit:mm

NPS	d	D	L	H	H1	H2	H3	W	S	A	D1	D2	D3	R1	R2	ISO 5211	Torque (in-lb)
2-1/2"	2.56	2.91	6.69	6.22	0.67	4.13	0.39	12.8	0.67	3.94	2.76	2.76	4.02	0.18	0.22	F07/F10	789.3
3"	2.99	3.54	7.09	6.5	0.67	4.39	0.39	12.8	0.67	3.94	2.76	2.76	4.02	0.18	0.22	F07/F10	858.5
4"	3.94	4.53	7.44	7.44	0.87	5.35	0.47	12.8	0.87	4.92	3.94	4.02	4.92	0.22	0.26	F10/F12	1026.7

unit:in